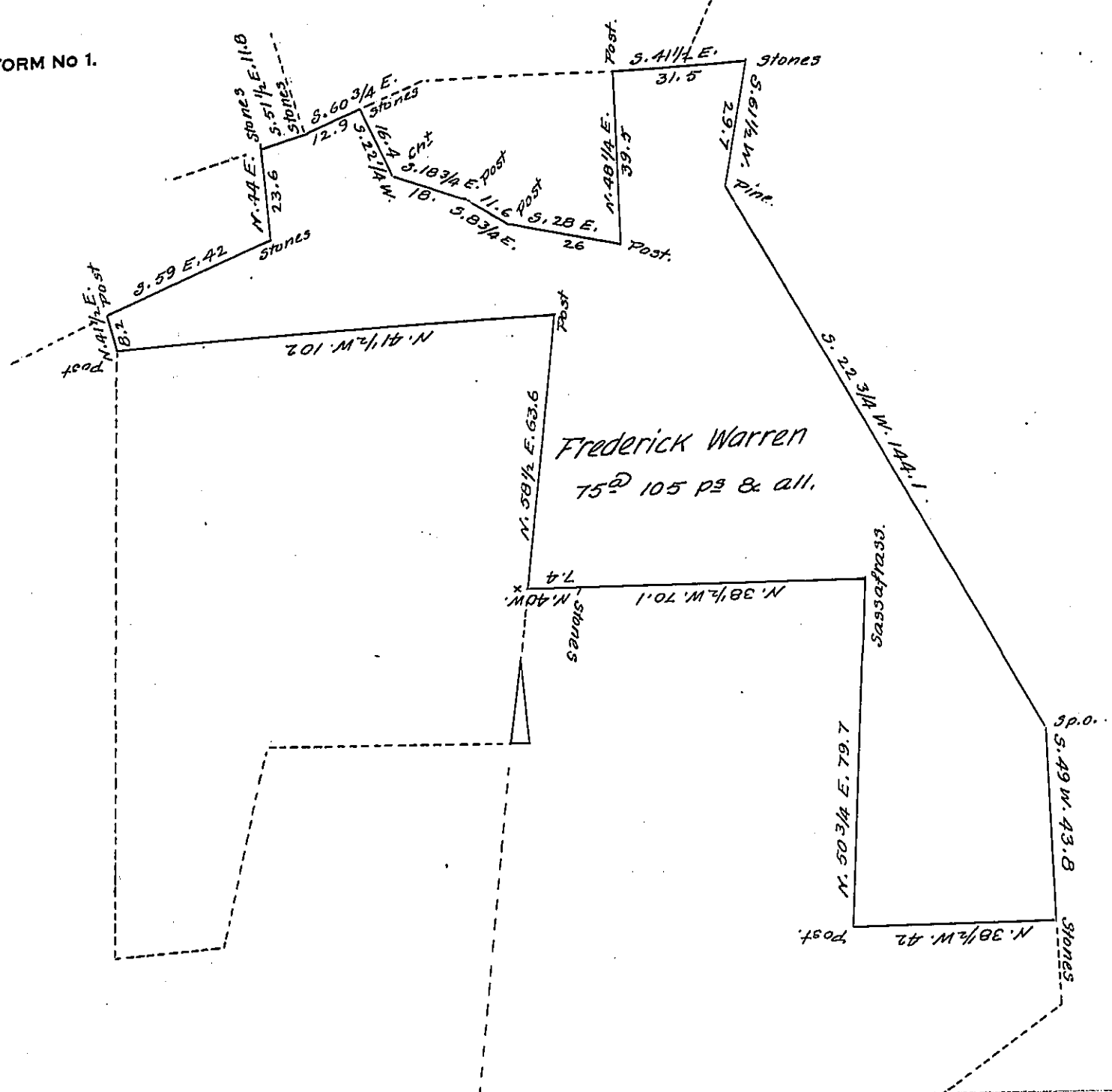


FORM NO 1.



Situate in Manallen Township Adams County being part of a tract said to contain 431@ 37 ps & all. but since found to contain 497@ 73 ps & all. Surv'd August 28th 1794 by Moses McClean D. & by warrant to Frederick Warren dated May 7th 1794. Surveyed Dec. 16th 1826 for Edward Warren containing Seventy five acres - one hundred & five perches & all.

By Sam^l Sloan, D.S.

To Gabriel Heister, Esq.
Surveyor Gen^l.

IN TESTIMONY that the above is a copy of the original remaining on file in the Department of Internal Affairs of Pennsylvania, made conformably to an Act of Assembly approved the 16th day of February, 1833, I have hereunto set my Hand and caused the Seal of said Department to be affixed at Harrisburg, this fourth day of June 1907.

Henry Houck
Secretary of Internal Affairs.